



After-sales service for fixed pv distributionized systems used in railway stations

48V 100Ah





After-sales service for fixed pv distributionized systems used in railw

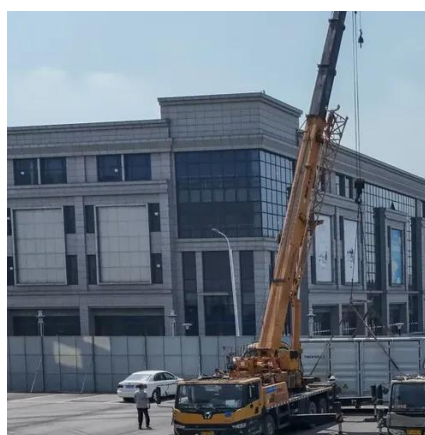


[Solar PV plant for supplying ancillary services in distribution systems](#)

The practice demonstrates the feasibility of using solar PV plants for grid support in critical situations, where the experience is repeatable for other distribution grid operators to integrate distributed ...

Afterpay

Access your Afterpay account, reset your password, verify your phone number, and troubleshoot login problems.



[Grid-Integrated Distributed Solar: Addressing Challenges for](#)

This brief overviews common technical impacts of PV on electric distribution systems and utility operations (as distinct from other utility concerns such as tariffs, rates, and billing), as well as ...



[Coordinated central-local control strategy for voltage management in ...](#)

To address this issue, this paper proposes a coordinated central-local control strategy for voltage management in PV-integrated distribution networks, incorporating the cycle life degradation ...



5 Years warranty



Log in to continue , Afterpay

Log in to continue , Afterpay

Business Hub

Access the Afterpay Business Hub to manage payments, transactions, reports, and settings securely with your email and password.



Buy now pay later with Afterpay

Afterpay is fully integrated with all your favorite stores. Shop as usual, then choose Afterpay as your payment method at checkout. First-time customers complete a quick registration, returning ...

Afterpay



Log in to your Afterpay account [https://](https://https://help.afterpay)
<https://portalapi.afterpay>
<https://card-api.payments.afterpay>



Shop with Afterpay

Afterpay is fully integrated with all your favorite stores. Shop as usual, then choose Afterpay as your payment method at checkout. First-time customers complete a quick registration, returning ...

[A multi-criteria decision-making framework for site selection of](#)

This study is dedicated to optimizing the site selection of photovoltaic power stations, aiming to address China's dual challenges in ensuring power supply and environmental protection by ...



[A multi-criteria decision-making framework for site selection of](#)

The construction of distributed photovoltaic power stations (DPVPS) along high-speed railway can supply power for the traction power supply system (TPSS) of high-speed railway. The ...

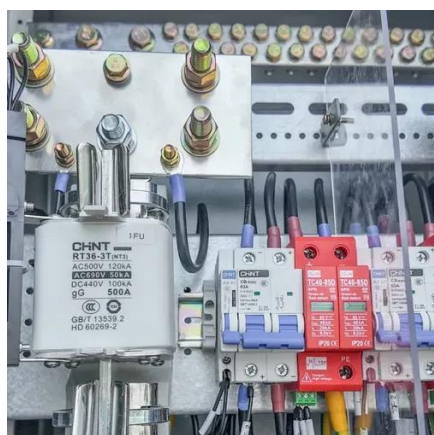


[How is the after-sales service of solar](#)



photovoltaic panels?

After-sales service incorporates assistance in clarifying warranty terms for customers, ensuring they understand what is covered, the process for claims, and the acceptable conditions for ...



Buy Now Pay Later with Afterpay

Afterpay allows you to buy now and pay in four instalments over 6 weeks. No interest. Use online and in-store. No fees when you pay on-time. Smart spending limits. Simply download the Afterpay App and ...

Log in to continue , Afterpay

Need to create an account? Download the Afterpay app Log in as a retailer instead



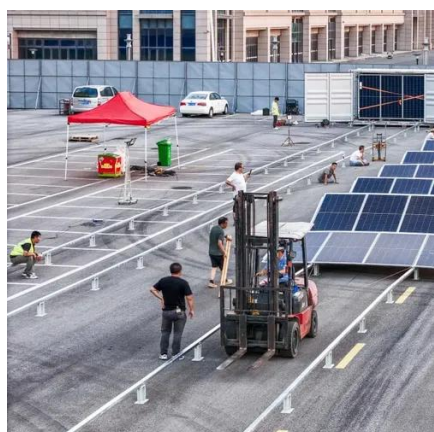
Afterpay Card

The Afterpay Card lets you shop now and pay it in 4 - just tap and go. How do I use Afterpay in-store? Shopping in-store is as easy as online. Simply tap to pay and split your purchase into 4 payme

Afterpay



We would like to show you a description here but the site won't allow us.

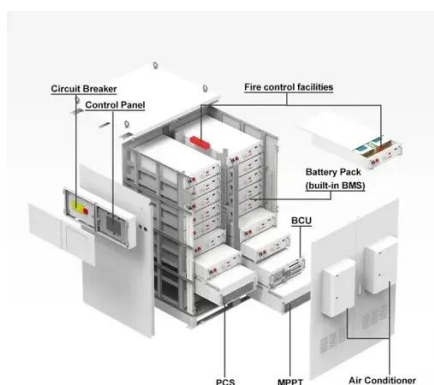


[Photovoltaic systems operation and maintenance: A review and future](#)

For example, a single paper might address various aspects, including different maintenance strategies for PV systems, assessing system performance using specific metrics, and ...

[Resilience-oriented critical load restoration for railway distribution](#)

After extreme events, distributed resources such as distributed photovoltaics (PVs) and energy storage systems (ESSs) can be coordinated to restore critical loads as soon as possible. In



[Guidelines for Operation and Maintenance of Photovoltaic Power ...](#)

provide comprehensive guidance for customized O&M service in seven different climate zones. The first four are for conditions which broadly prevail in large parts of the world (moderate, hot and dry, hot ...



Contact Us

For catalog requests, pricing, or partnerships, please visit:

<https://firmaskrzypek.pl>

Phone: +48 22 426 71 90

Email: info@firmaskrzypek.pl

Scan the QR code to access our WhatsApp.

