



# 505w photovoltaic panel size





## Overview

---

We do our best to provide information such as the RSM150-8-505M panel dimensions, datasheet, warranty information, wattage and more wherever possible. The LONGi 505W Monofacial Solar Panel (LR5-66HPH-505M) is a top-tier choice for efficient solar energy capture and utilization. Designed for both residential and commercial applications, this panel combines advanced technology with robust construction to deliver superior performance in varying. Example: 5kW solar system is comprised of 50 100-watt solar panels. Alright, your roof square footage is 1000 sq ft. Can you put a 5kW solar system on your roof?

For that, you will need to know what size is a typical 100-watt solar panel, right?

To bridge that gap of very useful knowledge needed. Backsheet Color: White | Frame Color: Silver | Frame Size: 35 mm Voltage (Vmp): 38. Series Fuse Rating: 25 Amp Shipping Weight: 57 lb | Dims (LxWxH): 82. We have an image for Risen Energy Co Ltd. Hi-MO 7 LR5-7. The Trina 505W photovoltaic panel represents more than just technical specs - it's a carefully engineered solution to three persistent industry headaches: Trina's engineers have achieved what many thought impossible - a 505W panel that's actually 3% narrower than 2023 models.



## 505w photovoltaic panel size



### [LONGi Solar , Hi-Mo 5 LR5-66HPH 480-505M , Solar Panel ...](#)

LONGi Solar Technology Co., Ltd. Solar Panel Series Hi-Mo 5 LR5-66HPH 480-505M. Detailed profile including pictures, certification details and manufacturer PDF

### [Trina 505W Solar Panel Dimensions: Why Size Matters in Modern](#)

"The 505W's dimensions represent the sweet spot between power density and installability," notes Dr. Elena Marquez from the Solar Technology Institute. "It's like fitting a V8 ...



### [LONGi 505W Monofacial Solar Panel with 1400mm cables](#)

With a sleek silver frame and white backsheet, this panel offers both aesthetic appeal and functionality. Its 35mm frame and MC4 connector facilitate easy installation, while the 1400mm cables provide ...



### [LONGi LR5-66HPH-505M 505W Monofacial Solar Module , BayWa r.e.](#)

Product Details Manufacturer Part Number: Longi 505W Silver Frame , Maker: LONGi Watt: 505 Number of cells: 132 (66) , Cell Type: Monofacial Backsheet Color: White , Frame Color: Silver , ...



### LONGi LR8-54HGBB-505M , 505 W Bifacial Solar Module

Featuring N-type HPDC (High-Efficiency Passivated Back Contact) half-cell technology, this panel delivers up to 505 W of peak power with 22.5% module efficiency and robust bifacial energy capture.



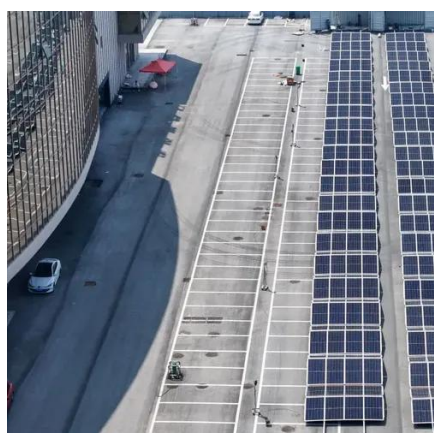
### **RSM150-8-505M 505W Solar Panel Information**

See the table below for available information we have about Risen Energy Co Ltd RSM150-8-505M solar panels. We do our best to provide information such as the RSM150-8-505M panel dimensions, ...



### In Stock 505w solar panel solar power solar panels for home use

We can produce market mainstream solar modules, including large size, MBB, high efficient single glass and double glass modules both mono and poly, full cells and half cut cells.



### **Longi 505W 66 CELL Solar Panel**



## 35MM , Monofacial

The Longi 505W 66 CELL Solar Panel offers an excellent 21.5% maximum efficiency. Ideal for roof-top applications, Longi solar panels also feature lower resistive loss with lower operating current, higher ...



[In Stock 505w solar panel solar power solar panels for ...](#)

We can produce market mainstream solar modules, including large size, MBB, ...

## LONGi - 505W Monofacial Solar Panel (LR5-66HPH-505M)

The LONGi 505W Monofacial Solar Panel (LR5-66HPH-505M) offers high-efficiency energy conversion, designed for durability and optimal performance. Ideal for maximizing power output, this panel is ...



[Standard Solar Panel Sizes And Wattages \(100W-500W Dimensions\)](#)

The goal here is to get to the average solar panel size by wattage. You can find typical dimensions of 100W, 150W, 170W, 200W, 200W, 220W, 300W, 350W, 400W, and 500W solar panels summarized ...



## Contact Us

---

For catalog requests, pricing, or partnerships, please visit:

<https://firmaskrzypek.pl>

Phone: +48 22 426 71 90

Email: [info@firmaskrzypek.pl](mailto:info@firmaskrzypek.pl)

Scan the QR code to access our WhatsApp.

