



# 475 solar panel size





## Overview

---

The JA Solar 475W photovoltaic panel measures approximately 2,172 mm (85.5 inches) in length and 1,130 mm (44.5 inches) in width. The dimensions of 60-cell solar panels are as follows: 66 inches long, and 39 inches wide. That's basically a 66×39 solar panel. Let us know what you're after through this form or by contacting a location near you and we'll promptly get you a quote with pricing and local availability. We'd love to work with you!. Standard Residential Panels Optimize Space and Handling: The industry-standard 60-cell panel dimensions (65" × 39" × 1.5") aren't arbitrary - they represent the optimal balance between power output, installation ease, and roof space utilization. At 40-46 pounds, they can be safely handled by. What are the dimensions of the panel?

How long is the warranty on the panel?

Which panels do you recommend for RV, marine?

Can this panel be used with a 12v system?

Can I pick up this panel from your fulfillment center to save on shipping?

How do I connect these panels?

How many panels do I need?

. The JA Solar 475W photovoltaic panel measures approximately 2,172 mm (85.5 inches) in length and 1,130 mm (44.5 inches) in width. Privacy Policy Want a custom solar estimate for your home?

Try our Solar Calculator.



## 475 solar panel size

---



### [Risen's New Powerful Rooftop Solar Panel For Australia Unveiled](#)

Chinese solar module manufacturer Risen Energy recently launched a 475-Watt bifacial TOPCon solar panel for the Australian rooftop residential and C& I market. Here's a look at what's expected to be a ...

### [JA Solar 475W Photovoltaic Panel Dimensions and Technical](#)

The JA Solar 475W photovoltaic panel measures approximately 2,172 mm (85.5 inches) in length and 1,130 mm (44.5 inches) in width, with a slim profile of 35 mm (1.38 inches) thickness.



### **Aiko 475W Neostar 2P with cell optimisation**

The Aiko 475W Neostar 2P is a high-efficiency solar panel featuring advanced cell optimisation technology. With its N-Type ABC cells, it delivers superior performance, enhanced durability, and ...

### [Trina 475W Solar Panel 252 Cell Bifacial TSM-475DEG15VC.20\(II\)](#)

Keeping The Cool in High Temperatures  
High Quality Standards  
Reliability and Degradation Resistance  
Certified For The Most Extreme Environmental Conditions  
TSM DEG15VC.20 manages to stay efficient even at high



temperatures. For every 1.8°F above 77°F, it loses just 0.34% in efficiency, allowing you to make the most of the sunniest hours. See more on a1solarstore Brand: Trina Solar Rated Power Output: 475 W Length: 91.14 in Voltage (VOC): 43.2 V c/g protection

## JA Solar 475W Photovoltaic Panel Dimensions and Technical

The JA Solar 475W photovoltaic panel measures approximately 2,172 mm (85.5 inches) in length and 1,130 mm (44.5 inches) in width, with a slim profile of 35 mm (1.38 inches) thickness.



## Maxeon 475W 72 Cell 1500V SLV/WHT Solar Panel, ...

Greentech Renewables supplies Maxeon 475W 72 Cell 1500V ...

## [Solar Panel Size & Dimensions Guide 2025](#) [. Complete Specs](#)

In this comprehensive guide, you'll learn everything you need to know about solar panel sizing, from standard dimensions to weight considerations, helping you determine the perfect solar ...



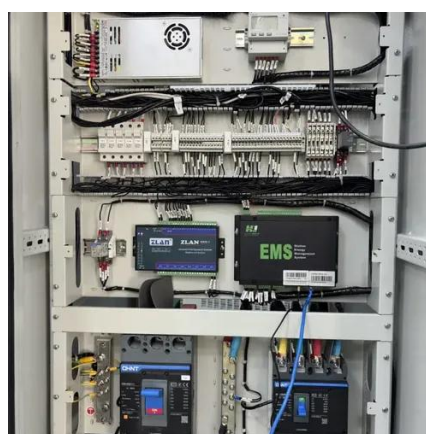
## [Trina 475W Solar Panel 252 Cell Bifacial TSM-475DEG15VC.20\(II\)](#)

To further boost the performance, Trina Solar employs half-cut cell technology. Each of the panel's 252 cells is only half the size of a traditional solar cell. This grants TSM DEG15VC.20 ...



## Standard Solar Panel Sizes And Wattages (100W-500W Dimensions)

If you have a 1000 sq ft roof, and you can use 75% of that roof area for solar panels, you can theoretically put 45 300-watt solar panels on a 1000 sq ft roof. A typical 400-watt solar panel is 79.1 ...

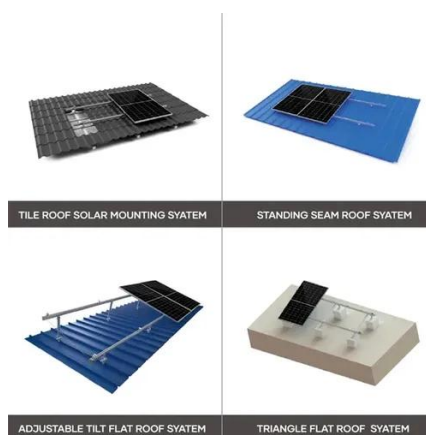


## Trina TallMax 475W Mono PERC Solar Panel TSM-DE15V(II)-475

Trina TallMax 475W Mono Solar Panel, TSM-DE15V (II)-475, Clear Frame, White Backsheet, 252-cell panel, 20.2% module efficiency rating. Plug type is MC4, Max series fuse rating is 25AMP, 25-year ...

## **Trina Solar TSM-475DE15V (II) 475w Mono Split Silver**

The TSM-475DE15V (II) TALLMAX from Trina Solar is a monofacial module made of monocrystalline PERC third-cut cells in a silver frame with a white backsheet. This module provides a maximum 475 ...



## **Qcells DUO XL G10**



All you need to know about the DUO XL G10 - 475 Watts solar panel including rating, cost, efficiency, and warranty terms.



### [Maxeon 475W 72 Cell 1500V SLV/WHT Solar Panel, MAX6-475-COM](#)

Greentech Renewables supplies Maxeon 475W 72 Cell 1500V SLV/WHT Solar Panel, MAX6-475-COM and other pre-qualified solar equipment from Maxeon Solar Technologies through ...

SUPPORT REAL-TIME ONLINE  
MONITORING OF SYSTEM STATUS





## Contact Us

---

For catalog requests, pricing, or partnerships, please visit:

<https://firmaskrzypek.pl>

Phone: +48 22 426 71 90

Email: [info@firmaskrzypek.pl](mailto:info@firmaskrzypek.pl)

Scan the QR code to access our WhatsApp.

