



# 310W photovoltaic panel voltage





## Overview

---

Detailed profile including pictures, certification details and manufacturer PDF. Detailed profile including pictures, certification details and manufacturer PDF. One-third of solar quotes now include panels above 450 watts, up from just 1% a year earlier, making 310W panels increasingly difficult to source. Efficiency Gap Widening: At 17-19% efficiency, 310W panels significantly lag behind modern alternatives that achieve 21-22% efficiency, requiring 25-30%. The low-profile all-aluminum compressed frame of every Silfab SLA solar panel is designed for seamless roof integration and enhanced for strength and rigidity. The sleek frame design allows for faster snow shedding and clearing of dirt build-up. Perfect for the solar. High Efficiency - Excellent low light performance on cloudy days, mornings and evenings: advanced surface texturing, back surface field and selective emitter., Ltd Solar Panel Series ED290-310W-30M.



## 310W photovoltaic panel voltage

---



### **MISSION SOLAR 310W 60 cell Solar Panel MSE310SQ8T**

Mission, 310W PV Module, MC4, PV Wire, 40mm Black Frame, Black Back Sheet, BoB, 60 Cell Mono-Perc, 20A Fuse, 1000VDC, 5BB, BAA, 285.8 PTC, MSE310SQ8T.

### **SLA-M 310 Wp**

Utilizing premium quality materials and strict quality control management to deliver the highest efficiency, premium quality PV modules 100% made in North America. Silfab panels are designed and ...



### **Canadian Solar CS6X-310P > 310 Watt Solar Panel**

MaxPower CS6X is a robust solar module with 72 solar cells. These modules can be used for on-grid solar applications. Our meticulous design and production techniques ensure a high-yield, long-term ...

### **Silfab Solar SLA-M 310 310W Solar Panel**

Premium made in North America 310 watt all-black solar panel for grid-tie solar systems. Contact us for discount price, complete systems and reviews.



## MISSION SOLAR 310W 60 cell Solar Panel MSE310SQ8T

Her Efficiency of Up to 18.65%  
High Efficiency at High Temperatures  
Quality and Reliability  
Enhanced Frame Design  
12 Year Product and 25 Year Performance Warranty  
The PERC 60 is a 60 cell solar panel featuring a sleek, all-black design coupled with outstanding power output. Its design makes it ideal for residential and commercial rooftop systems. It is certified for use in most harsh weather conditions: salt mist and ammonia. Tested to withstand 5631 Pa snow load and 185 mph wind. See more on a solar store  
Brand: Mission Solar  
Rated Power Output: 310 W  
Length: 65.53in  
Voltage (VOC): 40.12V  
ENF Solar

## Yantai Edobo , ED290-310W-30M , Solar Panel Datasheet , ENF ...

Detailed profile including pictures, certification details and manufacturer PDF.

## 310w Solar Panels: Maximizing Your Solar Investment

This guide aims to provide you with an in-depth understanding of the installation process for solar panel 310w, highlighting the importance of professional expertise at every step.



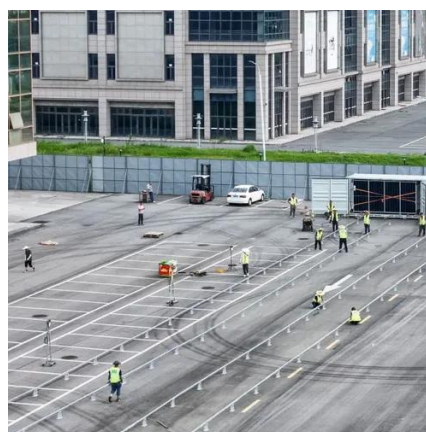


## Specification Data Sheet Solar Panel Gui

NU-AC Series 310 W The High Performer Powerful product features Guaranteed positive power tolerance (0/+5%) Monocrystalline silicon photovoltaic modules Robust product design

### [310 Watt Solar Panels: Complete 2025 Guide & Best Models](#)

Complete guide to 310W solar panels including specifications, performance, top brands, and buying advice. Compare Mission Solar, REC, Longi & more.



### [Yantai Edobo , ED290-310W-30M , Solar Panel Datasheet , ENF Panel ...](#)

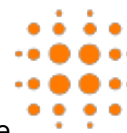
Detailed profile including pictures, certification details and manufacturer PDF.

### [TrinaSolar TSM-310-DD05H.05 \(II\) 310W Mono Solar Panel](#)

Maximize limited space with high efficiency: up to 189w/m<sup>2</sup> power density, low thermal coefficients for greater energy production at high operating temperatures.



## Sky Sun 310w



Electrical Characteristics ModuleType  
ARM-72-Testing Condition 310P+30% STC  
Maximum Power (Pmax/W) 310 Optimum  
OperatingVoltage(Vmp/V) 21.75 Optimum  
Operating Current (Imp/A) 13.11 ...



## Contact Us

---

For catalog requests, pricing, or partnerships, please visit:

<https://firmaskrzypek.pl>

Phone: +48 22 426 71 90

Email: [info@firmaskrzypek.pl](mailto:info@firmaskrzypek.pl)

Scan the QR code to access our WhatsApp.

