



200kW inverter cabinet terminal for port use





200kW inverter cabinet terminal for port use

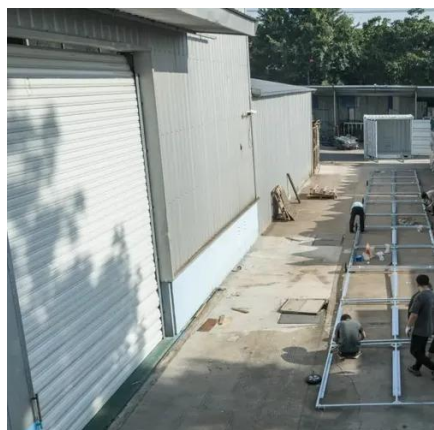


[200 kWh Battery Energy Storage System, BESS Cabinets](#)

We offer 200 kWh battery energy storage systems to enhance ...

[200 kW-480V, 1500 Vdc String Inverters, CPS America](#)

The new CPS 200 kW-480 V three-phase string inverters are designed for ground mount applications. The units are high performance, advanced, and reliable inverters designed specifically for the North American ...



CPS 200kW PCS Storage Inverter

The 200kW/200kVA high power CPS three phase energy storage inverter is designed for use in commercial and utility-scale grid-tied energy storage systems.

[200 kWh Battery Energy Storage System, BESS Cabinets](#)

We offer 200 kWh battery energy storage systems to enhance energy efficiency and ensure reliable power management. High-performance BESS cabinets for commercial and industrial use.



150-200kW Solar inverter_Solis Three Phase Grid-Tied Inverters

With an MPPT current of up to 54A, it is perfect for all 182/210mm high-power PV modules and supports more than a 150% DC/AC ratio, bringing more yield. It features intelligent DC breaking and intelligent AC-DC ...



200kW, 1200V, 250A DC-DC Cabinet

Zekalabs presents our 200kW, 1200V DC-DC cabinet solution. The unit is bidirectional and can serve in many intricate applications.



Chziri 200kw Inverter Custom-made

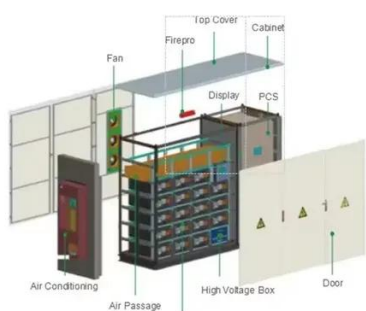
ZVF300 series frequency inverters are high performance open loop vector inverters for control asynchronous AC induction motors and permanent synchronous motors.



200KWh Outdoor Cabinets



Our 200KWh outdoor cabinet energy storage system works with PowerNet outdoor control inverter cabinets for modular expansion. This means you can meet the needs of large-scale applications without limitations, such ...



ZQ Complete Sets of Inverter Control Cabinet K200-1/1 200KW - Efficient

Optimize your power control with the ZQ Complete Sets of Inverter Control Cabinet K200-1/1 200KW. Designed for industrial applications, this cabinet features an inlet reactor, outlet filter, and efficient inverter control for ...

200kW Three-Phase Inverter with XM3 Power Module , Wolfspeed

This 200kW three-phase inverter demonstrates best-in-class system-level power density and efficiency obtained by using Wolfspeed's new XM3 power module platform.



VFI CPM S200K-42U

Modules are installed in special cabinets, which manage synchronized work and parallel operation, resulting in very low Mean Time To Repair (MTTR) and parallel redundancy. Each unit is equipped with dual input, ...



Contact Us

For catalog requests, pricing, or partnerships, please visit:

<https://firmaskrzypek.pl>

Phone: +48 22 426 71 90

Email: info@firmaskrzypek.pl

Scan the QR code to access our WhatsApp.

