



2000 square meters of solar power station





Overview

Calculate the total area needed for your solar panel installation quickly and accurately with our easy-to-use solar panel area calculator. Free calculator with multiple units, efficiency modes, and detailed visualizations. This calculator provides estimates only and should not be used as the sole basis for solar system purchases or financial. Abstract—The rapid deployment of large numbers of utility-scale photovoltaic (PV) plants in the United States, combined with heightened expectations of future deployment, has raised concerns about land requirements and associated land-use impacts. Yet our understanding of the land requirements of ground-mounted photovoltaic (PV) and concentrating solar power (CSP) facilities. Extrapolating this, a 1 MW solar PV power plant should require about 100000 sqft (about 2. Accurate area estimation ensures optimal panel placement, maximizes energy harvest, and prevents shading or structural conflicts. A single MW of solar energy has the capacity to power between.



2000 square meters of solar power station

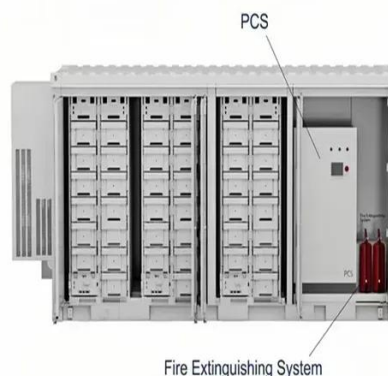


[Land-Use Requirements for Solar Power Plants in the United ...](#)

We identify two major classes of solar plant land use--direct impact (disturbed land due to physical infrastructure development) and total area (all land enclosed by the site boundary)--by which we ...

Solar Power Per Square Meter Calculator

Calculate solar panel energy output per square meter. Get accurate daily, monthly, and annual production estimates based on location, panel specs, and system losses.



Solar Panel Output Per Square Meter

Discover how much electricity solar panels generate per square meter, explore efficiency factors, technology comparisons, and future innovations in photovoltaic energy.



Area Required for Solar PV Power Plants

Extrapolating this, a 1 MW solar PV power plant should require about 100000 sqft (about 2.5 acres, or 1 hectare). However, owing to the fact that large ground mounted solar PV farms ...

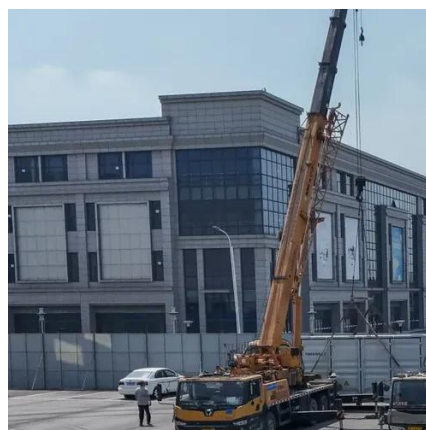


Solar Calculator

Calculate how much power you need with these solar calculators to estimate the size and the cost of the solar panel array needed for your home energy usage.

[Total Area Required for Solar Panel Installation Calculator](#)

Calculate the total area needed for your solar panel installation quickly and accurately with our easy-to-use solar panel area calculator.



[Land Requirements for Utility-Scale PV: An Empirical Update on ...](#)

Abstract--The rapid deployment of large numbers of utility-scale photovoltaic (PV) plants in the United States, combined with heightened expectations of future deployment, has raised concerns about land ...



Photovoltaics



Calculator for the power per area or area per power of a photovoltaic system and of solar modules. You can enter the size of the modules and click from top to bottom, or omit some steps and start e.g. with ...



How Much Space Does A Solar Power Plant Take Up?

Calculations from various large solar projects in the US reveal that a typical solar installation needs approximately 100-120 square meters on flat roofs to generate 1 MW.

Solar-Rooftop Calculator

Online Solar Roof Top Calculator Calculates the number of solar panels, kilowatt capacity, daily unit production, and require area in Square Meter as well as Square Feet based on the average monthly ...





Contact Us

For catalog requests, pricing, or partnerships, please visit:

<https://firmaskrzypek.pl>

Phone: +48 22 426 71 90

Email: info@firmaskrzypek.pl

Scan the QR code to access our WhatsApp.

