



# 160 kW inverter





## 160 kW inverter



### [160 kW Frequency Inverter, 3 Phase 240V, 400V, 480V](#)

The three phase inverter with IP 20 protection, processes good performance including overheating protection, overload protection, and overcurrent protection. Built-in interior PID controller is ...

### **inverter 160 kw: High-Efficiency Power Solution**

Discover the best inverter 160 kw for industrial and solar applications. Find high efficiency, reliable performance, and expert recommendations. Click to explore top-rated options now!

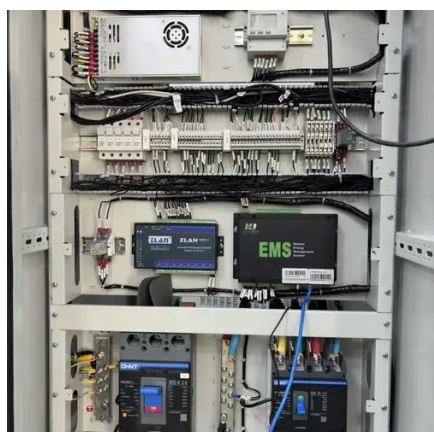


### **AC Drive Delta 160kW C2000 3PH VFD1600C43E**

The Delta VFD-C2000 AC Drive Three Phase 400v 160kW VFD1600C43E is a high-level field oriented control AC motor drive with a high-performance variable-frequency technology, FOC control.

### [Siemens Micromaster 440 160kW/200kW 400V 3ph AC Inverter Drive](#)

Siemens Micromaster 440 (MM440) Series AC Frequency Inverter for 160kW (215HP) 400V 3 Ph motor to 302A at high overload, or 200kW (270HP) to 370A when Fan/Pump rated, operates in VxF or ...



### **INVT Inverter 160kW, 3PH 380V**

Buy INVT Inverter 160kW, 3PH 380V for only \$3,320.00 at Azar Group!

### [VFD1600C43A-00 Delta Frequency inverter C2000+, 160 kW](#)

Brochures, manuals and technical information. Need assistance or advice? Feel free to get in touch. We can be reached on weekdays between 08:30 and 17:00. Feel free to contact one of our specialists ...



### **Frequency Inverter ST500 160KW 400V**

Description Highlights Power: 160KW Rated input current: 307A Rated output current: 304A Integrated DC-reactor Voltage: 400VAC, +-10%... More. Frequency, current, voltage, torque, PID,



### **INGECON SUN 160TL**



The new INGECON SUN 160TL photovoltaic inverter provides up to 160 kW (if connected to a 690 Vac network) in a single 75kg/165lbs unit, reaching maximum efficiency values of up to 99.1% with ...

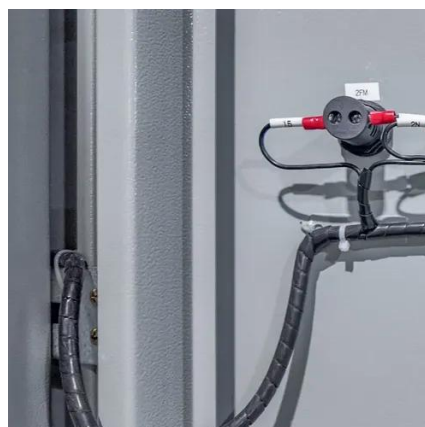


### [Schneider Electric Variable Speed Drive, 160 kW, 3 Phase, ATV600 ...](#)

It features 3 built-in RJ45 communication ports as standard, 1 Ethernet port, 2 serial ports. It works at a rated supply voltage from 380V to 440V AC. This drive provides up to 30% energy saving when on ...

### **ATV 61HC16N4 3 phase 160kW**

The Schneider Electric's Altivar 61 frequency drive is an inverter for three-phase synchronous and asynchronous motors. It has been designed for common fluid management applications in industrial ...





## Contact Us

---

For catalog requests, pricing, or partnerships, please visit:

<https://firmaskrzypek.pl>

Phone: +48 22 426 71 90

Email: [info@firmaskrzypek.pl](mailto:info@firmaskrzypek.pl)

Scan the QR code to access our WhatsApp.

